

# MODEL TACU-CHB (SCROLL)

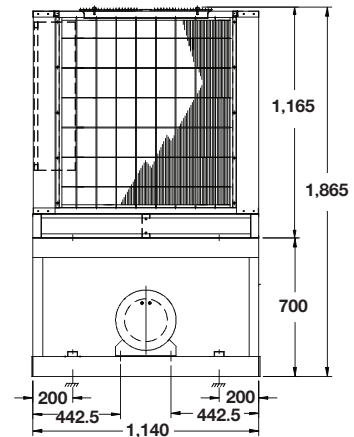
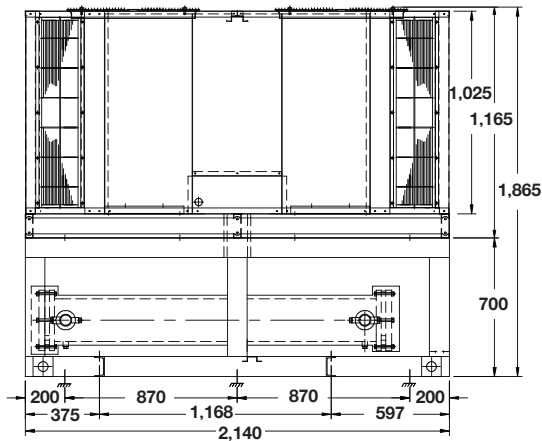
## PACKAGED AIR-COOLED CHILLER

15.8 -31.5 TR

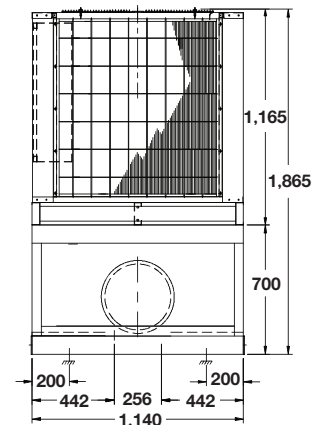
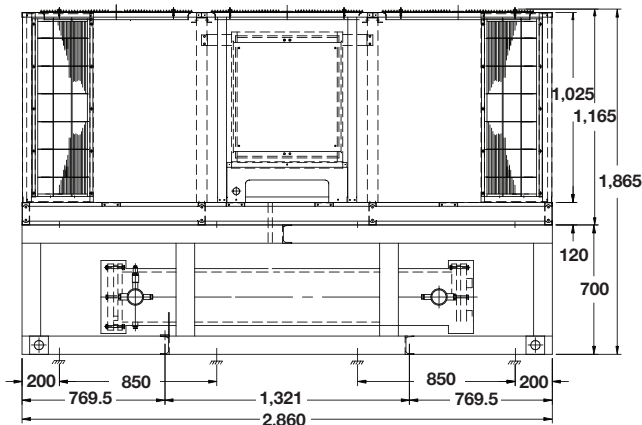
55.6 - 110.8 kW



MODEL : TACU-CHB-020,025,030



MODEL : TACU-CHB-040



# SPECIFICATIONS

## UNIT CASING

- Constructed of zinc-coated heavy-gauge, galvanized steel
- Powder-coated for protection against rust

## COMPRESSOR

- Hermatic scroll compressor
- All compressor are mounted on vibration isolation

## REERIGERANT

- R410a

## HEAT EXCHANGER

- Seamless copper tubes, mechanically expanded into aluminium fins with full height collars
- Leak tested at 600 Psig from factory
- Dynamically and statically balanced, direct-drive fan
- Shell and Tube evaporator

## STANDARD ACCESSORIES

### REFRIGERATION PARTS

- Service Valves for Liquid line and Suction line
- Thermostatic expansion valves
- Sight Glasses
- Filter Driers

### ELECTRICAL PARTS

- Magnatic & Overload contactor for fan motor and compressor
- High-Low pressure switches
- Digital temperature control
- Timer Delay Relay Devices

# PHYSICAL DATA

SPECIFICATION MODEL : TACU-CHB (SCROLL)

MODEL	TACU-CHB	020	025	030	040
<b>NOMINAL CAPACITY**</b>	MBH.	<b>189</b>	<b>226</b>	<b>278</b>	<b>378</b>
<b>POWER CONSUMPTION</b>	(kW)	<b>19.64</b>	<b>23.70</b>	<b>28.50</b>	<b>38.69</b>
<b>COMPRESSOR</b>	Type	<b>SCROLL</b>			
	Circuits	2			
<b>CONDENSER COIL</b>	Type	Aluminium Louver Fin with Inner Groove Copper Tube			
Face Area	(ft2)	46.66		56.66	
Rows / FPI		2/16		3/14	
Tube Size	(Inch)	3/8			
<b>CONDENSER FAN &amp; MOTOR</b>		Propeller Fan : Vertical Discharge : Direct Drive			
Quantity		2		3	
Power	(HP.)	3/4		1	
RPM		900			
Air Quantity	(CFM)	14,000		20,000	
<b>REFRIGERANT</b>	Type	R-410a			
	Charge	Holding Charge: R-410a			
<b>WATER CHILLER</b>		Shell and Tube Heat Exchanger			
Chilled Water Flow Rate	(GPM)	37.8		45.2	
Chilled Water Temp. IN/OUT	°F	55/45			
Chilled Water Pressure Drop	(Ft. WG)	2.49		7.93	
Water Connection IN/OUT	(Inch)	2		2-1/2	
<b>DIMENSION</b>		2,140		2,860	
Length	(mm.)				
Width	(mm.)	1,140			
Height	(mm.)	1,865			
<b>WEIGHT (Aprox)</b>	(kgs.)	670		755	
		840		1,000	

\*\*Nominal Capacity Based on 45 °F Suction Temp. And 95 °F Ambient Temp. (1 MBH x 1,000 ,BTUH)

# ELECTRICAL DATA

MODEL	TACU-CHB	020	025	030	040
<b>COMPRESSOR (Each)</b>	Quantity	2		4	
	Volt / Phase / Hz	380/3/50			
	Power Input (Watt)	9,190		10,890	
	FLA. (Amp.)	23		24	
	LRA. (Amp.)	153		174	
<b>FAN MOTOR (Each)</b>	Quantity	2		3	
	Volt / Phase / Hz	380/3/50			
	Power Input (Watt)	632		960	
	FLA. (Amp.)	1.20		3.6	

Note

FLA = Full Load Amp.

LRA = Locked Rotor Amp.

Specication are subjected to change without notice for future improvement.

\*\*Eurovent certified for model DAHH only.



UNIAIRE CORPORATION CO., LTD.

69 Moo 3 Kingkeaw Rd., Rachatewa District, Bangplee,

Samutprakarn 10540 Thailand

Email.local@uni-aire.com | Email.export@uni-aire.com

Tel.+662-312-4500, www.uni-aire.com

@uni-aire | Uni-Aire | Whatsapp.+666-2312-3069

